

WIDYA INOVASI INDONESIA



COMPANY Profile

**Delivering Future
to Present.**



Delivering Future to Present.



Delivering Future to Present

About

Founded in principle of helping and making life easier, Widya Indonesia is an Information and Technology company with a strong focus on **delivering the future technology to present** through research and development.

Established in **2018**, we have strong commitment to never stop making new innovations.

We offer a line-up of ground breaking technology products and services so we could maintain our **customer's satisfaction**.

Advance Your Fleet Management

Widya Tracker is a system to **manage and monitor** fleet vehicles, such as cars, trucks, box cars, trailers, containers, tractors and other vehicles. **An easy way to track and manage** fleet vehicles including location, driver information/behavior, vehicle diagnostics and maintenance records.

We provide Integrated Solutions through **WidyaTracker**.



Widya Tracker Features

1 Tracker Device

- Hardware Device
- Cellular Network
- GPS Tracking
- TCP Protocol

2 Driver Behaviour & Safety Management Device

- Eagle Eye T
- BOX-Advanced Driving Assistant System
- Driver Status Monitor

3 Geo Fence

- Draw Boundaries
- Area Restriction
- Auto shutdown

4 Report

- Vehicle Log Data
- Tracking Route
- Total Price

5 Web Based

- Real Time Tracking
- Rental and Driver Management
- Vehicle Information and Monitoring
- Notification alert

Fleet Tracking Benefits

Your business can improve profit, enhance customer satisfaction, be compliant with regulations and promote fleet safety.

Increase Revenue And Reduce Costs

- Complete more job with smart routing and job dispatch
- Cut fuel spend by reducing unnecessary mileage and improving driver behavior
- Productivity reporting to maximize fleet capacity



Increase Customer Satisfaction

- Instantly respond to customer requests with an exact location of drivers and vehicles
- Ensure driver productivity with two-way messaging by communicating in real-time
- Get more trips per vehicle and faster service by optimizing routing with daily vehicle usage



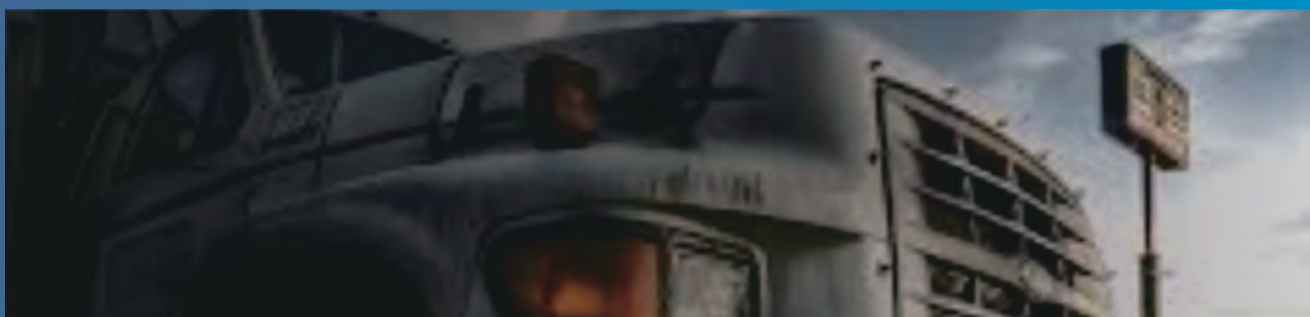
Assure Regulatory Compliance

- Improve your CSA score (to identify high-risk motor carriers and drivers) by tracking criteria, such as vehicle maintenance and driver behavior
- Electronic logging for drivers meets standart safety requirements, reduces administrative



Promote Fleet Safety

- Reduce accidents and traffic violations by recognizing unsafe driver behavior with performance data
- Identify a personalized training program for each driver by utilizing driver scorecards
- Real-time alerts for drivers, to assist them in driving safely



Widya Tracker Applications



Agricultural Industry



Construction Industry



Fast Moving Consumer Goods (FMCG) industry



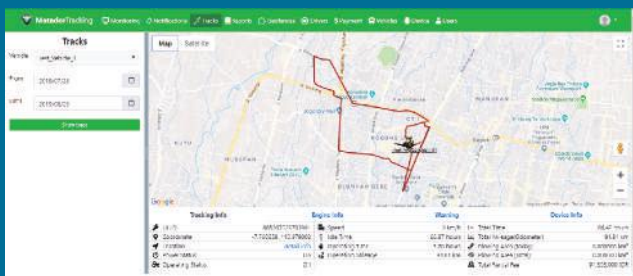
Oil and Gas Industry



Transport and Distribution Industry

Reporting and Analytics

Widya Tracker can be monitored from websites and applications with an easy to understand display. Users can monitor their vehicles in realtime.





Widya Batching Plant Management

Widya Batching Plant Management is a material management system in a batching plant from upstream to downstream. The amount of material enters the batching plant area, stock material data, and used material data can be **monitored in real-time** on an integrated website.

Features



Recognitions

- Truck ID Recognitions
- Stock Pile Recognitions
- Material Provider ID (Beacon)



Integrations

- Truck weight scale
- Batching plant engine (i matrix) platform



Data Analytics

- Material Flow
- Fraud Detections
- HSE History Audit

We provide Integrated Solutions through **Widya Batching Plant Management.**



Benefit

Your business can improve profit, enhance customer satisfaction, be compliant with regulations and promote fleet safety.

Minimize Fraud and Errors

- Minimize the possibility of trucks being weighed many times on the arrival of material
- Minimize the possibility of errors in the pouring material that comes into a pile of material stock
- Minimize possible errors in the delivery process of batching plant output products



Real-time Monitoring of Material Amounts

- Recording of vendors, types and amounts of material that come in allows audits of material vendors if fraud is detected
- Monitoring material stock in realtime with the camera, so that any changes that occur can be known directly
- Monitoring the amount of material used, product yield and consumers who receive the product
- Get more trips per vehicle and faster service by optimizing routing with daily vehicle usage reports

Material Management Efficiency

- Material data is integrated and can be monitored in realtime on one website
- Recording and timestamp integration in each part of the material flow, thus minimizing any delays or buildup in one section.



Solution

Batching Plant Management



Material Arrival

Recording types, quantities and data about material vendors accompanied by timestamps and photos of material can minimize fraud



Material Stock

Monitoring the amount of material stored to ensure the availability of concrete-making materials and minimize any material pouring errors

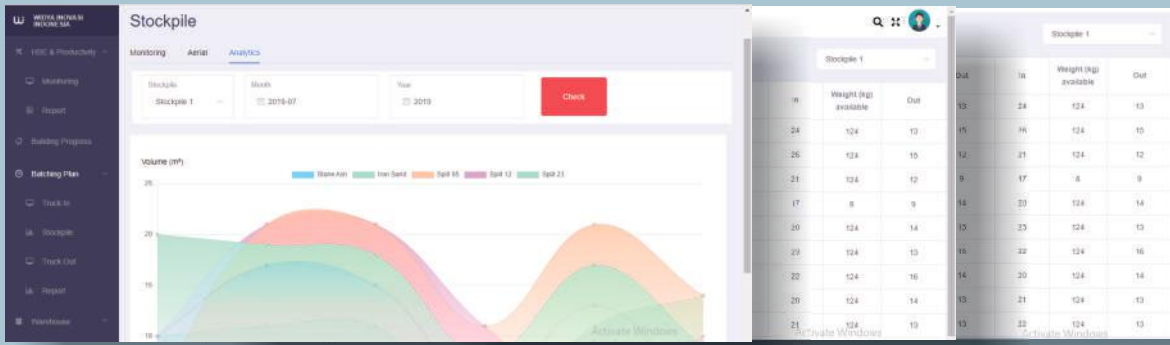


Used Material

Integration of the system with embedded batching plant software enables monitoring of the use of materials, product results and truck data that is delivered to customers



Reporting and Analytics



Material data entered, material stock and use of materials **integrated on one website** can be **analyzed** for suitability to support audits and detect errors, fraud and efficiency of **batching plants**.

How We Work



Widya HSE Monitoring for **Constructions.**



Widya HSE (Healthy, Safety and Environment) **monitoring** is a surveillance platform for monitoring **construction workers**. This platform can **detect** the worker **Personal Protective Equipment** (helmet and vest).

Widya HSE Features



Recognitions

- Worker type recognitions
- PPE recognitions



Data Analytics

- Violation Warning
- HSE Rating
- HSE History Audit



Web Applications

- Realtime Monitoring
- Realtime Notifications
- Camera Management



Reporting and Analytics



Benefit

Real-time Monitoring of PPE Completeness

- Monitor the complete use of worker's helmets and vests in realtime on an integrated website.
- HSE supervisors do not need to monitor the field directly all the time



Minimize The Risk of Accidents

- Detect violations and notify along with photos of violators.
- As evidence of insurance claims in occurrence of accident

PPE Compliance Analysis

- Recording the types of violations and the number of violators so the data will support the analysis and auditing of the level of compliance of the use of PPE on a project





Applications



Agricultural Industry



Construction Industry



Mining Industry



Petroleum Industry

Widya Assessment has developed assessments which are powered by large predictive data sets to optimize the prediction of assessments with a hierarchy of specialized algorithms.

We provide Integrated Solutions through **Widya Assessment**.



1 Online Interview

- Psychogram Analysis
- Suggestion

3 Online Test

- Test Analysis

2 Recognitions

- Emotions Recognition
- Gesture Recognition
- Voice Recognition

4 Socmed Analytic

- Data
- Sentiment
- Characteristics

Benefit



Reduce Bias

- Regional Background
- Racial and Religion Background



Efficient

- Time Efficient
- Faster Recruitment and Assessment Process



Objective

- Assessment Based on AI
- Based on Existing Data

Applications



Recruitment
Process



Recruitment
Company



Analytics
Company



Reporting and Analytics

Users will create an account on our website and conduct the interview. The data analysis, the report, and the recommendation will be presented in amazing statistics. It also can be downloaded by the user so they can evaluate more about their strengths and weaknesses.



WIDYA ROBOT

Delivering Future to Present

A humanoid robot that will be performed as a personal assistant. Widya Robot will be able to show its facial expression, sustain eye contact, recognize individuals, read emotion and assess human personalities.

WIDYA ROBOT Features

1 Video Recognitions

- Expressions Recognition
- Gestures Recognition

2 Sound Recognitions

- Emotions Recognition
- Voice Comand

3 Vision Robot

- Tracking
- Human Detections

4 Apps Features

- Ecommerce
- Search
- Music

5 Motions Robot

- Interactions

Benefit



Recognitions

- Audio & Visual Recognitions



Apps Integrations

- All Features Connected With the Apps



Data Analytics

- User Habit Analytics



Applications



Personal
Assistant



Airport



Train
Stations



Mall

WIDYA HEALTH

Easy Health Check for Everyone

Widya Health is product of Widya Inovasi Indonesia that is use for health chek up independently. We provide health check system for everyone, anytime trough **Widya Health**.

Features

1 Smart Scale

- Measure Body Weight
- Measure Body Fat Composition
- Calculate Body Mass Index

2 Pulse Oxymetri

- Measure Heart Rate Continously
- Measure SpO2 Level Continously

3 Tensi Meter

- Measure Blood Pressure

4 Blood Check

- Measure Blood Glucose Level
- Measure Blood Hemoglobin Level
- Measure Blood Colesterol Level

5 Camera

- Measure Body Heigt
- Measure Stomach Diameter

6 Infrared Thermometer

- Measure Body Temperature



Benefit



Building innovative healthcare solutions



Bringing cost effective virtual healthcare services to the rural doorstep



Strategic alliances for telemedicine and e-health services



Business development for Health Care providers, Medical Tourism companies, etc.

Applications



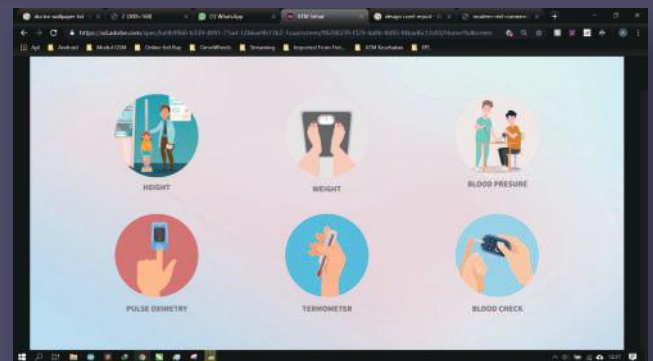
Office



Clinik



Pharmacy



Our Gallery





The Future of Voice Assistant is Now

Widya Wicara is a smart wireless speaker that is equipped with AI (artificial intelligence). Widya Wicara can be used for making commands by converting your voice using Bahasa (Indonesian). It can play music and become a personal **assistant** who helps creating reminders, shopping lists, or answering questions.

Widya Wicara Wow

It comes with a small-handly-round-shaped that is easily carried anywhere. It can be connected to a TV or monitor that has infrared frequency.

Widya Wicara Prima

It comes with all Widya Wicara basic features and equipped with additional features that can store and play music offline and enter data via a USB cable.

Benefit



Online Shopping



Playing Music



Searching & News



Recording and Send Messages



Answering Question



Applications



Management Database



All Indonesian



Students



Household

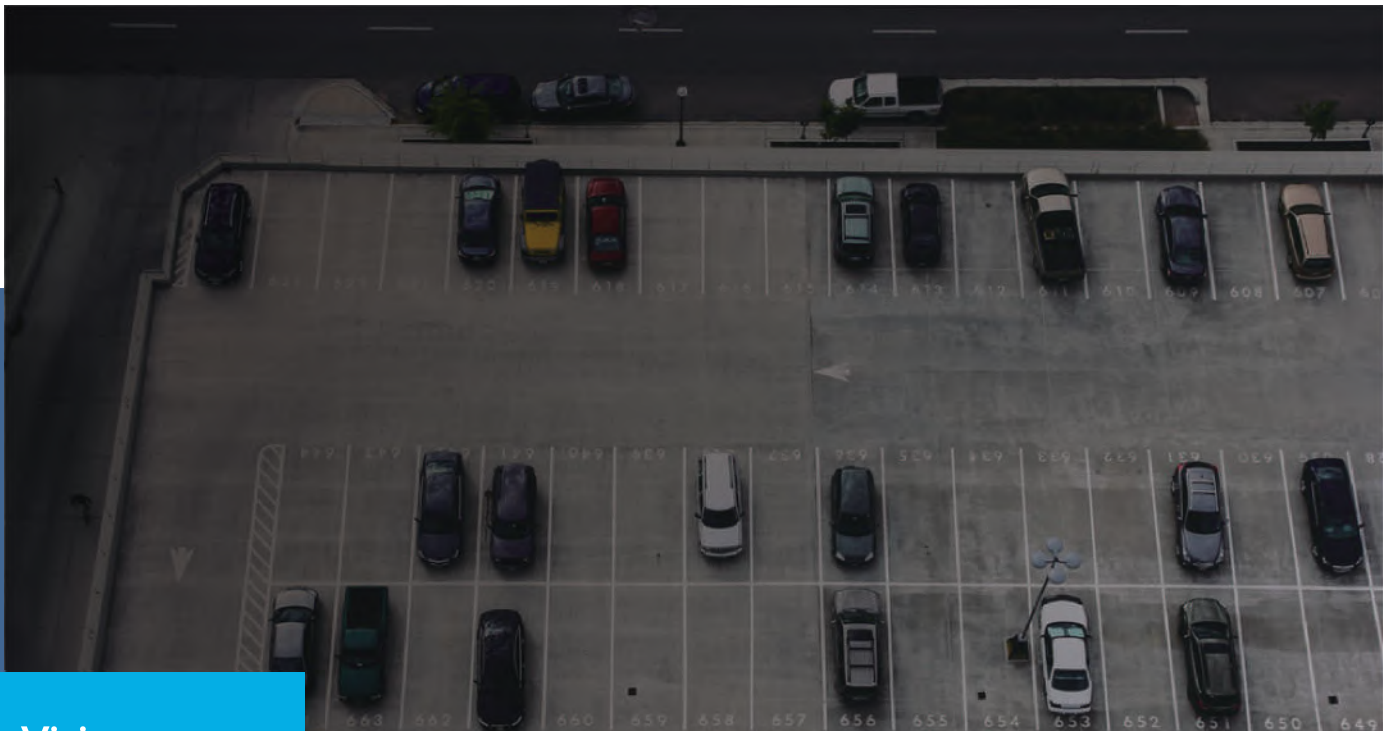
Widya **Vision**



A smart camera **analytics technology** with intelligent motion detection, facial recognition, human/vehicle detection and data analytics using **CCTV camera**.

Widya **Vision** Features

- 1 Data analysis based on Deep Learning technology
- 2 Multi-function mono camera
- 3 Multi-object monitoring
- 4 Run directly or on the Cloud platform
- 5 Easy integration with existing camera system



Widya **Vision** Benefit



Facial Recognition

- Counting Employee
- Attendance System Management
- Identification of Employees Emotions
- Identification of Stranger



Smart Traffic Analytics

- Detecting and recognizing vehicle types
- Detecting and recognizing safety helmet
- Supporting E-Tilang program
- Detecting traffic congestion
- Identifying vehicle speed
- Parking system management
- Detecting and recognizing traffic violations
- Detecting falling objects on the road
- Recognizing and notifying accidents
- Vehicle counter



Smart Parking System

- Vehicles Counting
- Vehicles Mapping
- Parking Lot Availability
- Parking Management System
- Anticipating Parking Fraud
- Identification Vehicles Type



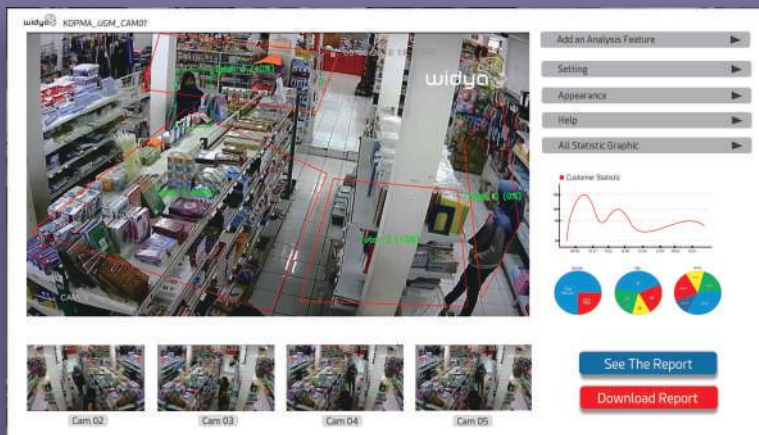
Smart Store Analytics

- Recording visitor faces
- Visitor counter
- Detecting visitor movement and behavior
- Product ranking
- Analyzing visitor hotspot

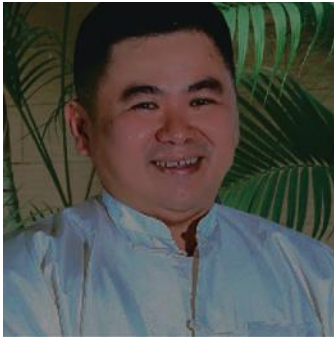
Reporting and Analytics

CCTV video data will be processed using a high specification computer (GPU) to get detailed analysis results. Reports will be displayed on the Widya Smart Vision dashboard.

Reports can also be downloaded or printed out so users have physical data. Smart Vision is very useful for analyzing objects so that data can decide what strategies will be made later.



Our Team



Kiwi Aliwarga (Mentor)

known as the founder and executive chairman of UMG Group of Companies, one of the leading company in Myanmar with over 5000 employees and the largest manufacturer of heavy machineries, and distributor of industrial systems, logistics, vehicles, and constructions with over 50 branches throughout Myanmar, Sri Lanka, Cambodia, Vietnam, Thailand, Singapore, and Indonesia.



Alwy Herfian Satriatama (CEO)

Graduated from Universitas Gadjah Mada and MIT Bootcamp DeepTech shortcourse alumni. Alwy began his start up journey since he was in college. He often invited as an inspiring speaker in a lot of events. He also won national and international entrepreneurship competitions.

PARTNERS:





PT. WIDYA INOVASI INDONESIA

Pogung Baru Blok C7 RT 19 RW 52, Pogung Kidul,
Sinduadi, Sleman, Yogyakarta 55284, Indonesia